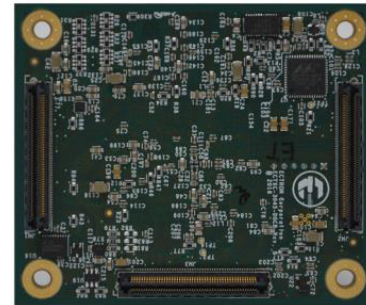
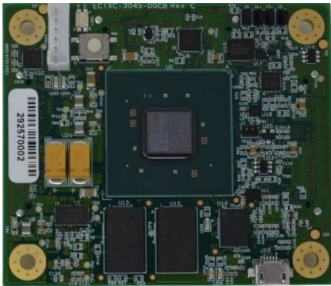


## DGCB - 3045 - 30

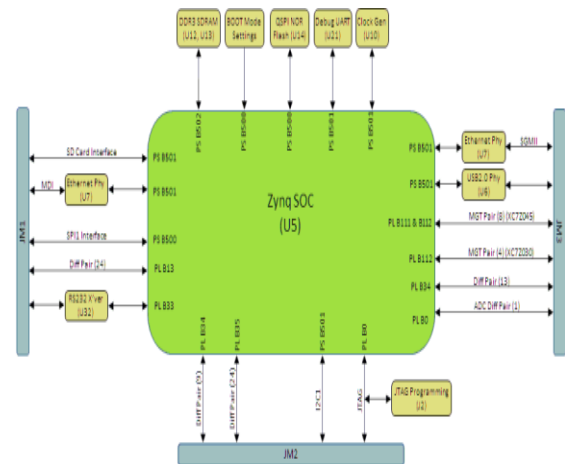
Ectron Digital Controller Board (DGCB) is a COM (Computer On Module) that has a multiple applications in controls, signal processing, IoT for Industrial, Building automation and COTS markets. The small form factor design allows easy integration with existing products in various form factors such as Com Express, PCIe 104 or others. Powerful platform offering a combination of FPGA and 1 GHz Dual core ARM processor with Neon Extensions.



### AZURE IoT READY, CONNECT TO MICROSOFT CLOUD

#### FEATURES

- Powerful Credit Card Sized Computer (72mm x 62 mm)
- Xilinx Zynq 7030, Dual Core ARM @ 1GHz
- NEON™ SIMD Engine (Single/Double Precision Floating Point)
- RSA, AES and SHA 256b Authentication for Secure boot
- 125K Logic Cells, 400 DSP Slices
- 2x UART, 2x CAN 2.0B, 2x I2C, 2x SPI
- 2x USB 2.0(OTG) with PHY
- 2x Tri-Mode Gigabit Ethernet with PHY
- 2x SD/SDIO, 4 SERDES
- Dual 12-bit 1 MSPS ADC, 18 usable differential inputs
- PCIe Gen 2 x4 interface
- 8 Gb DDR3 Memory
- Flash, SD Card Interface
- IoT Ready (LINUX supplied with board)
- Operating temperature range : -40°C to +85°C
- Class 3 PCB, RoHS Compliant



#### APPLICATIONS

- Control Computer
- Embedded IoT
- Signal Processing
- COTS MIL Applications
- Edge IIoT Applications
- Building Automation
- Industrial Vision



Made in the USA

**Contact us for custom design and Volume orders**  
**Deploy DGCB COM modules using ECT-DGCB-BB Motherboards**